



# Next2Sun Premium Solar fence

THE FENCE,  
THAT PAYS FOR ITSELF

The premium solar fence provides enough electricity to power a single family home while offering a low maintenance and weather resistant alternative to hedges and fences. The bifacial premium solar fence is versatile and can be used for property enclosures, divisions, and separations, as privacy protection – or even as power generator.

## Multiple benefits



The solar fence serves as a fence, a power generator, and pays for itself. At the same time, it makes every user more independent from high electricity costs.

## Space saving alternative



Due to its vertical design, the solar fence requires significantly less space than a conventional PV system. Therefore it is an excellent alternative or complement to a rooftop system.

## Demand orientated power production



The solar fence generates higher yields at a low standing sun, especially during the morning and evening hours, as well as in the less productive winter months when energy demand is high.

## Easy installation and maintenance



The solar fence can be adjusted to terrain slopes and is quickly assembled with just a few screw connections. Due to its simple and ground level design, the maintenance effort is very low.

## Durability



The use of specially designed glass-glass modules ensures lasting stability and robustness. High quality galvanization with optional powder coating provides maximum corrosion protection. The cables are protected from external influences within enclosed frame profiles.

## Above average performance



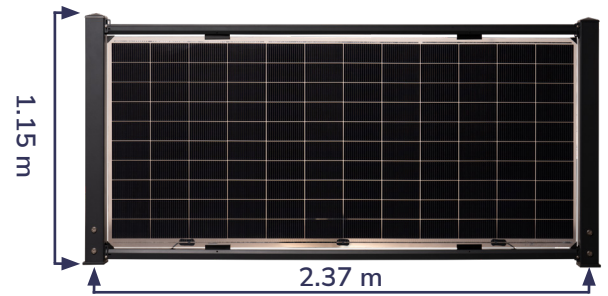
The combination of a shading optimized frame system and bifacial solar modules with high rear side efficiency enables an output of up to 1200 kWh/kWp per year.

# The right fence for everyone: The variants

Engineered in Germany

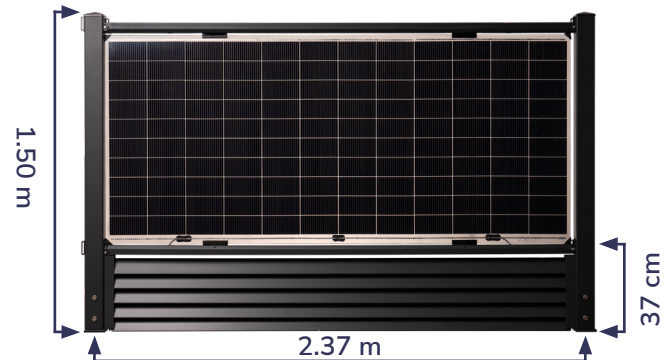
## Premium solar fence 115

- ✓ Height 1.15 m
- ✓ Width 2.37 m ( center of post – center of post )
- ✓ Installation on a wall
- ✓ Possible supplementation with a filling or end element



## Premium solar fence 150

- ✓ Height 1.50 m ( up to 1.80 m possible )
- ✓ Width 2.37 m ( center of post – center of post )
- ✓ Distance to ground 37 cm
- ✓ Installation on a wall or by point foundation
- ✓ Possible supplementation with a filling or end element



## Premium solar fence<sup>2</sup>

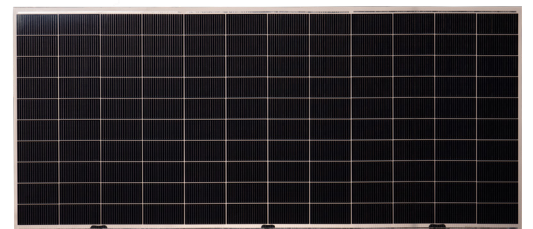
- ✓ Height 2.58 m
- ✓ Width 2.38 m ( center of post – center of post )
- ✓ Distance to ground 40 cm
- ✓ Installation by point foundation
- ✓ Excellent privacy protection with double the yield
- ✓ Possible supplementation with a filling or end element



All variants available in galvanized  or RAL 7016 

## Best performance: The Next2Sun module

- ✓ Fast and easy wiring due to optimal arrangement of junction boxes
- ✓ Durable frameless bifacial glass-glass modules
- ✓ The latest high-performance cell technology
- ✓ Shading-optimized design for vertical bifacial systems
- ✓ Aesthetically pleasing tile design
- ✓ 15 years of German product warranty
- ✓ 30 years of linear German performance warranty



Request your personalized offer today!

Next2Sun AG | Franz-Meguin-Straße 10a | 66763 Dillingen | Germany  
+49 6831 126 000 | info@next2sun.de | www.next2sun.com



We stand for energy transition.